

RESEARCH ARTICLE

Open Access



# Association of lipoproteins and thyroid hormones with cognitive dysfunction in patients with systemic lupus erythematosus

Li Lu<sup>1,2,3†</sup>, Wei Kong<sup>1,2†</sup>, Kangxing Zhou<sup>1,2</sup>, Jinglei Chen<sup>2,3</sup>, Yayi Hou<sup>1,2,3\*</sup>, Huan Dou<sup>1,2,3\*</sup> and Jun Liang<sup>1,2\*</sup>

## Abstract

**Background:** Neuropsychiatric manifestations occur in up to 75% of adult systemic lupus erythematosus (SLE) patients and are one of the major causes of death in SLE patients. Cognitive dysfunction is a typical clinical feature of neuropsychiatric SLE (NPSLE), which seriously affects the quality of life of patients. Dyslipidaemia and thyroid symptoms, which are prevalent in SLE patients, have both been related to neuropsychiatric disturbances, including significant psychiatric and cognitive disturbances. This study aimed to investigate whether cognitive dysfunction in patients with SLE was related to the expression of serum thyroid hormone and lipoprotein levels.

**Methods:** A total of 121 patients with SLE and 65 healthy controls (HCs) at Nanjing Drum Tower Hospital completed a cognitive function test, and 81 SLE patients were divided into a high-cognition ( $n = 33$ ) group and a low-cognition group ( $n = 48$ ). The clinical and laboratory characteristics of the patients were compared; moreover, correlations between serum HDL-C, LDL-C, F-T3 and F-T4 levels and cognitive function were analysed. Serum levels of APOE, APOA1, IGF-1, and IGFBP7 in 81 patients were detected by ELISA, and the correlation between these four proteins and cognition was analysed separately.

**Results:** The patients with SLE with abnormal cognitive function were less educated than the HCs. For low-cognition patients, the levels of albumin, F-T3 ( $P < 0.05$ ) and F-T4 decreased, while D-dimer, anti-dsDNA antibody, and IgM levels increased. Serum F-T3 and F-T4 levels positively correlated with cognition. Furthermore, serum protein levels of APOE and APOA1 showed no difference between the high- and low-cognition groups. However, the serum APOE levels were negatively correlated with line orientation scores, and APOA1 levels were positively correlated with coding scores.

**Conclusions:** Serum F-T3 and F-T4 levels were both positively correlated with four indexes of cognition (language was the exception), while serum APOE levels were negatively correlated with line orientation scores, APOA1 levels were positively correlated with coding scores, and IGFBP7 levels were negatively correlated with figure copy scores. These results demonstrated that F-T3 and F-T4 might be clinical biomarkers of cognitive dysfunction in SLE.

**Keywords:** Systemic lupus erythematosus (SLE), Cognitive dysfunction, Free triiodothyronine (F-T3), Free thyroxine (F-T4), Lipoprotein

\* Correspondence: [yayihou@nju.edu.cn](mailto:yayihou@nju.edu.cn); [douhuan@nju.edu.cn](mailto:douhuan@nju.edu.cn); [13505193169@139.com](mailto:13505193169@139.com)

†Li Lu and Wei Kong contributed equally to this work.

<sup>1</sup>Department of Rheumatology and Immunology, Nanjing Drum Tower Hospital, The Affiliated Hospital of Nanjing University Medical School, Nanjing 210008, PR China

Full list of author information is available at the end of the article



© The Author(s). 2021 **Open Access** This article is licensed under a Creative Commons Attribution 4.0 International License, which permits use, sharing, adaptation, distribution and reproduction in any medium or format, as long as you give appropriate credit to the original author(s) and the source, provide a link to the Creative Commons licence, and indicate if changes were made. The images or other third party material in this article are included in the article's Creative Commons licence, unless indicated otherwise in a credit line to the material. If material is not included in the article's Creative Commons licence and your intended use is not permitted by statutory regulation or exceeds the permitted use, you will need to obtain permission directly from the copyright holder. To view a copy of this licence, visit <http://creativecommons.org/licenses/by/4.0/>. The Creative Commons Public Domain Dedication waiver (<http://creativecommons.org/publicdomain/zero/1.0/>) applies to the data made available in this article, unless otherwise stated in a credit line to the data.

## Introduction

Systemic lupus erythematosus (SLE) is a chronic systemic autoimmune disease characterized by autoantibody production and immune complex deposition, culminating in destructive injuries to multiple organs, including central nervous system (CNS) [1, 2]. Neuropsychiatric SLE (NPSLE) is a manifestation of SLE associated with severe neuropsychiatric (NP) syndromes, including various neurological and psychiatric features [3]. Several studies have estimated that up to 75% of patients with SLE experience NP manifestations [4, 5], including mood disorders, confusion, headache, and cognitive dysfunction, which significantly degrade quality of life and affect the survival of patients [6]. However, the underlying disease mechanisms remain largely unknown, as NP symptoms are nonspecific, clinically validated biomarkers for diagnosis are nonexistent, and NP diagnosis is difficult, often leading to palliative rather than therapeutic protocols [7, 8].

Cognitive function assessment is one of the valuable clinical skills used to screen for cognitive impairment and assess the severity of a disease [9]. Many cognitive function assessment tools are available, including the Taiwan Mental State Examination [10], Montreal Cognitive Assessment [11], and AD8 Dementia Screening Interview [12]. However, the assessment of cognitive function with these tools is incomplete and insensitive to mild cognitive impairment due to the relative simplicity of these scales. Although a complete set of neuropsychological tests can comprehensively assess the level of cognitive function and the severity of cognitive impairment, these assessments generally take a long time, are prone to subject fatigue, and are especially unsuitable for the clinical evaluation of elderly individuals [13]. Therefore, tools that are simple to implement and can relatively comprehensively evaluate cognitive function have great application value. The Repeatable Battery for the Assessment of Neuropsychological Status (RBANS) overcomes the aforementioned shortcomings. It was originally used to identify pathological declines in cognitive function in the elderly population and to screen neuropsychological functional status in the general population [14]. To date, the RBANS has been applied to individuals with bipolar disorder [15], multiple sclerosis [16], cerebrovascular disease [17], epilepsy [18], and other diseases involving cognitive impairment. The results have shown that the RBANS could be used as an effective neuropsychological function screening tool, with good internal consistency, test-retest reliability, structural validity, and parallel validity, and sex had no significant effect on the evaluation results of the RBANS [19–21]. All these findings implied that the RBANS could be a favourable means of assessing cognitive function in patients with SLE.

Lipid metabolism abnormalities usually result in dyslipidaemia, which is prevalent in patients with SLE, with an incidence ranging between 18.1 and 75% [22]. Dyslipidaemia is characterized as disordered low-density lipoprotein (LDL) and/or decreased high-density lipoprotein (HDL) levels in the serum [23]. Dyslipidaemia is known to be associated with lupus disease activity, such as kidney damage and cardiovascular disease, which are the most common complications in patients with SLE and are closely related to the long-term prognosis [24]. Lipoprotein particles, such as chylomicrons, very low-density lipoproteins (VLDL), LDL and HDL, contain a class of apolipoproteins that play a crucial role in lipid metabolism. Apolipoproteins always serve as carrier, receptor-binding, and regulatory proteins in these particles to transport lipids between tissues for fuel and cholesterol metabolism and participate in the development of cardiovascular disease, obesity, diabetes mellitus and other diseases [25]. Regarding hippocampus-dependent cognition, researchers have found that a high-fat diet in rats impaired neurogenesis in the dentate gyrus of the hippocampus [26], decreased hippocampal production of brain-derived neurotrophic factor [27], increased apoptosis of hippocampal neurons, and was associated with a decreased weight of the hippocampus [28], which likely played a key role in neuronal loss, leading to learning and memory deficits. However, whether the NP manifestations in SLE are related to lipoproteins and their metabolism remains unclear. Nonthyroidal illness syndrome is also prevalent in SLE and characterized by decreased serum triiodothyronine (T3), thyroxine (T4), and thyroid-stimulating hormone levels [29–31]. Thyroid hormones can influence all aspects of lipid metabolism, including synthesis, mobilization, and degradation, thus resulting in dyslipidaemia [32]. Earliest descriptions of thyroid disease showed a link with neuropsychiatric disturbances, including significant psychiatric and cognitive disturbance, classical slowness of thought, and increased depressive symptoms [32]. Treatment with T4 has been shown to help improve disturbances in mood [33] but not help improve neurocognitive function, especially performance in complex attention tasks and verbal memory tests [34]. Inextricable links exist between SLE, dyslipidaemia and abnormal thyroid hormone levels. However, whether dyslipidaemia and thyroid hormone abnormalities in patients with lupus are related to cognitive dysfunction remains unknown.

In this study, correlations between cognitive function and levels of serum thyroid hormones (F-T3 and F-T4) and lipid metabolism-regulated molecules (apolipoprotein E (APOE) and apolipoprotein A1 (APOA1), insulin-like growth factor-1 (IGF-1) and insulin-like growth factor binding protein 7 (IGFBP7)) in SLE patients were evaluated. We aimed to discover changes in the levels of

serum biomarkers and proteins possibly related to cognitive function in SLE that would allow the diagnosis or prediction of the prognosis of SLE.

## Materials and methods

### Patients and study design

A total of 121 patients with SLE who visited the Department of Rheumatology, Nanjing Drum Tower Hospital, Nanjing, China, from May 2019 to May 2020 were prospectively enrolled. All patients were diagnosed according to the SLE criteria of the American College of Rheumatology [35]. The disease activity of these patients was measured using the Systemic Lupus Erythematosus Disease Activity Index (SLEDAI) [36, 37]. Patients who had other autoimmune diseases; had a history of familial hyperlipidaemia and/or thyroid disease, diabetes mellitus, and/or other rheumatic diseases; and took lipid-lowering agents or thyroid medications were excluded. Active patients were classified into two groups based on the RBANS score: the low-cognition group ( $n = 33$ ; RBANS score: 51–90) and the high-cognition group ( $n = 48$ ; RBANS score: 91–130). Patients who developed neuropsychiatric syndromes not attributable to SLE (electrolyte imbalances, infections, or medications) were excluded. Meanwhile, 65 age- and sex-matched healthy controls (HCs) were recruited from the Physical Examination Center of Nanjing Drum Tower Hospital. This study was approved by the ethics committee at The Affiliated Drum Tower Hospital of Nanjing University Medical School (ID: SC201700201) and undertaken in accordance with the guidelines of the Declaration of Helsinki. At entry, patients completed a standardized medical history, laboratory tests, and analyses. All detections were carried out at the clinical laboratory of Nanjing Drum Tower Hospital. The demographic features of the patients and HCs are shown in Table 1.

### Cognitive dysfunction study

Cognitive dysfunction in SLE is characterized by deficits in attention, learning and recall, verbal and nonverbal fluency, language, visuospatial skills, executive functions,

and motor dexterity [38–40]. A total of 121 patients with NPSLE and 65 normal volunteers were invited to participate in this study. All participants provided additional medical information using an ad hoc questionnaire and had a physical examination. Since the RBANS has been translated into a Chinese version and its clinical effectiveness and test-retest reliability have been established in healthy populations [41, 42], we applied the RBANS in our sample for cognitive function assessment. Generally, the RBANS contains twelve subtests that provide five general index scores and a total score. The test index scores included immediate memory (consisting of list learning and immediate story memory tasks), visuospatial/constructional (consisting of figure copy and line orientation tasks), language (consisting of picture naming and semantic fluency tasks), attention (consisting of digit span and coding tasks) and delayed memory (consisting of list recall, list recognition, figure recall, and delay story recall tasks); the detailed methods are provided in the [supplementary materials](#). The stimuli were contained in a wire-bound, easel-type booklet, making the test easily portable and allowing for bedside administration. The total administration time was 20–30 min.

### Measurement of serum autoantibodies and lipid metabolism-related proteins

The levels of autoantibodies and lipoproteins (HDL-C and LDL-C) in the serum of patients were measured within 1 month of cognitive function testing. Thyroid hormones, including FT3, FT4 and TSH, were measured using a commercially available electrochemiluminescence (ECLIA) kit (Roche). The serum levels of APOE, APOA1, IGF-1 and IGFBP7 were detected using enzyme-linked immunosorbent assay (ELISA) kits following the manufacturer's protocols [43]. The results were fitted to the standard curve, and the detection ranges were as follows: APOE (1.5–400 ng/mL), APOA1 (6.3–200 ng/mL), IGF-1 (62.5–4000 pg/mL), and IGFBP7 (625–40,000 pg/mL).

### Statistical analysis

Data were expressed as the means  $\pm$  standard deviation. Differences between the two groups were determined using the unpaired-sample Student's *t* test if the variance was normally distributed, and the Mann–Whitney *U* test was used for nonnormally distributed data. Differences among observed frequencies were tested using the chi-square test, while Pearson's correlation coefficients were used to calculate the correlation between variables [43]. Additional correlations were calculated using Spearman's correlation test. Data were analysed and visualized using SPSS 16.0 software or GraphPad Prism 7.0 (GraphPad Software, CA, USA), and a two-tailed *P* value  $< 0.05$  was considered statistically significant.

**Table 1** Demographic features of the 121 SLE patients and 65 healthy controls in the study

Variables	SLE ( $n = 121$ )	HCs ( $n = 65$ )	<i>P</i> Value
Age, (years)	33.88 ( $\pm 11.77$ )	36.69 ( $\pm 13.88$ )	0.150
Females, n (%)	106 (87.60%)	50 (76.92%)	0.093
Education, (years)	11.95 ( $\pm 3.05$ )	13.28 ( $\pm 4.58$ )	$< 0.05^*$
SLEDAI	10 (0–47)	NA	/

Data are expressed as median (minimum - maximum, number (percentage), or mean  $\pm$  standard deviation (SD) values. *P* values are based on independent sample *t*-test and Chi-square test for normally distributed variables.  $*P < 0.05$ , vs. HCs. The Graph Pad Prism 7.0 and SPSS Statistics 16.0 software were used for statistical analysis

## Results

### Clinical characteristics and cognitive function of patients with SLE and HCs

The demographic features of the 121 patients with SLE and 65 HCs in the study are summarized in Table 1. The mean ages of the patients and HCs were  $33.88 \pm 11.77$  and  $36.69 \pm 13.88$  years, respectively. The mean level of education was  $11.95 \pm 3.05$  years in the patient group, which was significantly lower than that in the HC group ( $P < 0.01$ ).

Afterward, the RBANS was performed on 121 patients and 65 HCs. Significant differences were found in list learning ( $P < 0.0001$ ) and immediate story recall ( $P < 0.01$ ) scores between the patients with SLE and HCs. The line orientation ( $P < 0.05$ ) and picture naming ( $P < 0.01$ ) scores were both lower in the SLE patients than in the HCs. In addition, the digit span ( $P < 0.05$ ) and coding ( $P < 0.01$ ) scores were lower in the SLE patients, as were the list recall ( $P < 0.01$ ), list recognition test ( $P < 0.01$ ), delayed story recall ( $P < 0.01$ ), and figure recall ( $P < 0.05$ ) scores. These tests corresponded to five cognitive domains: immediate memory, visuospatial/construction, attention, language, and delayed memory (Table 2). The results showed that levels of immediate memory, visuospatial/construction, attention, and delayed memory were significantly lower in the patients than in the HCs, while language features showed no obvious difference (Fig. 1).

### Demographic features, clinical manifestations, and treatment of patients

Based on the RBANS scores, the 81 patients were divided into a high-cognition group ( $n = 33$ ) and a low-cognition group ( $n = 48$ ). As shown in Table 3, no statistically significant differences in age or sex were found between the two groups. The mean level of education was  $10.77 \pm 3.64$  years in the low-cognition group, which was lower than that in the high-cognition group ( $P < 0.01$ ). The levels of the SLEDAI ( $13.91 \pm 11.79$  vs  $9.38 \pm 5.79$ ) were significantly higher in the patients with low cognition compared with those with high cognition (all  $P < 0.05$ ). In addition, the disease duration between the two groups showed no difference ( $P = 0.2486$ ).

Patients with low cognition had more frequent anaemia (23.4% vs 3.03%) than patients with high cognition ( $P < 0.05$ ). Meanwhile, the prevalence of rash, mucosal ulcers, haematuria, proteinuria, pyuria, arthritis, vasculitis, pleurisy, pericarditis, low complement, thrombocytopenia, leukopenia, lupus nephritis, and neurological disorder showed no difference between the two groups. In addition, the treatment with prednisone, hydroxychloroquine, cyclophosphamide, azathioprine, methotrexate, and cyclosporine was not different between the two groups (Table 3).

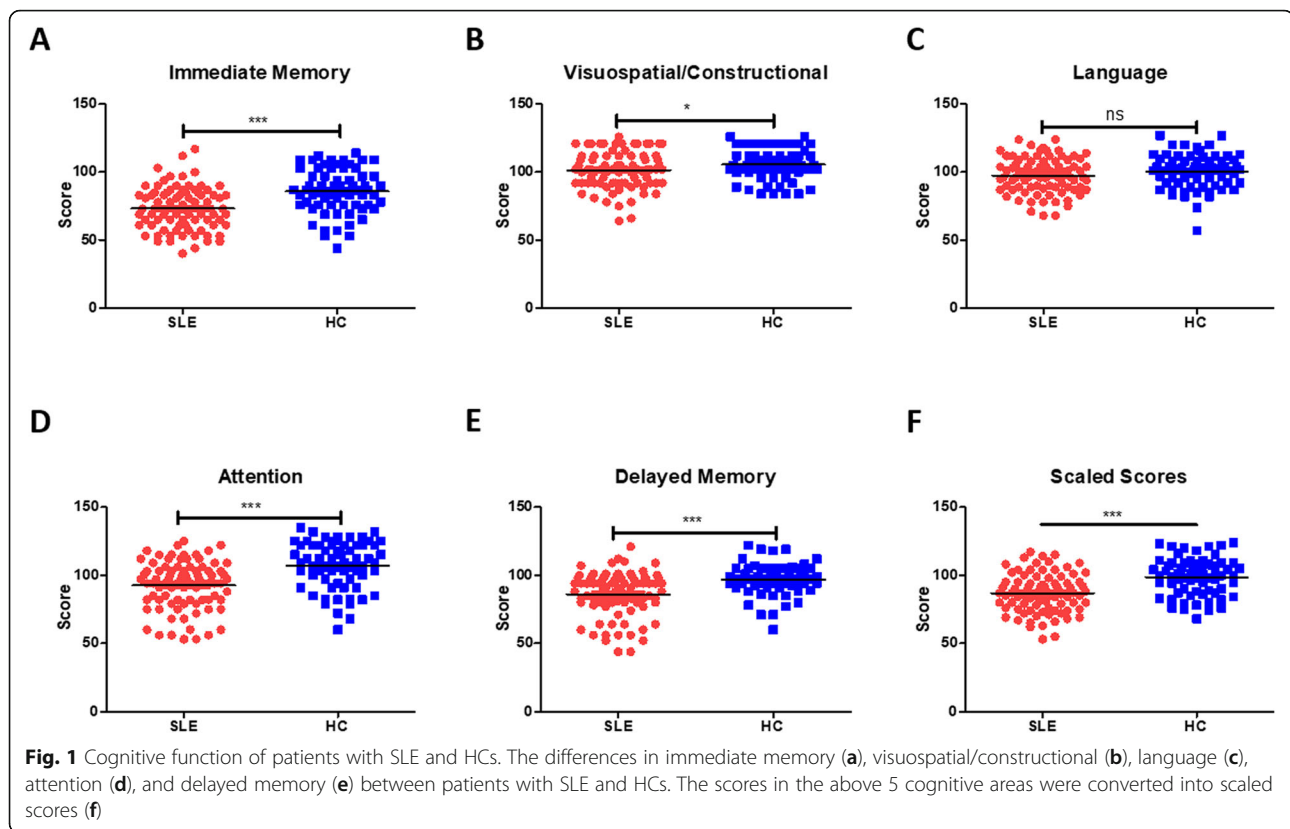
### Comparison of clinical and laboratory characteristics of patients

The study investigated the laboratory parameters of patients enrolled in this study (Table 4). The patients with

**Table 2** The data of commonly cognitive assessment

RBANS score	SLE (n = 121)	HCs (n = 65)	P Value
<b>Immediate memory</b>			
List Learning, median (range)	24 (5–39)	29 (15–36)	< 0.005***
Immediate Story Memory, median (range)	13 (1–22)	16 (1–21)	< 0.01**
<b>Visuospatial/constructional</b>			
Figure Copy, median (range)	20 (14–20)	20 (17–20)	0.2963
Line Orientation, median (range)	17 (8–20)	18 (9–20)	< 0.05*
<b>Language</b>			
Picture Naming, median (range)	9 (7–10)	9 (8–10)	< 0.01**
Semantic Fluency, median (range)	21 (7–33)	23 (11–35)	0.0873
<b>Attention</b>			
Digit Span, median (range)	13 (6–16)	14 (8–16)	< 0.05*
Coding, median (range)	46 (4–70)	54 (13–74)	< 0.01**
<b>Delayed memory</b>			
List Recall, median (range)	5 (0–10)	7 (2–10)	< 0.01**
List Recognition, median (range)	20 (16–20)	20 (17–20)	< 0.01**
Delay Story Recall, median (range)	7 (0–12)	9 (0–12)	< 0.01**
Figure Recall, median (range)	15 (5–20)	16 (7–20)	< 0.05*

Data are expressed as mean  $\pm$  standard deviation (SD) values. *P* values are based on independent sample t-test for normally distributed variables. \* $P < 0.05$ , \*\* $P < 0.01$ , \*\*\*  $P < 0.005$ , vs. HCs. The Graph Pad Prism 7.0 software were used for statistical analysis



low cognition had substantially lower albumin ( $31.76 \pm 5.79$  mg/dL vs  $34.91 \pm 4.13$  mg/dL;  $P < 0.01$ ), F-T3 ( $3.20 \pm 1.03$  pmol/L vs  $3.71 \pm 1.06$  pmol/L;  $P < 0.05$ ), and F-T4 ( $12.51 \pm 3.43$  pmol/L vs  $14.97 \pm 2.14$  pmol/L;  $P < 0.05$ ) levels than the patients with high cognition. The levels of anti-dsDNA antibody ( $P < 0.05$ ) and IgM ( $P < 0.01$ ) and the number of B cells ( $P < 0.05$ ) were higher and the D-dimer levels were considerably higher in patients with low cognition ( $P < 0.001$ ). The levels of lipid fractions, low-density lipoprotein cholesterol (LDL-C) and high-density lipoprotein cholesterol (HDL-C) displayed no differences between the two groups, and the other clinical indexes, including globulin, 24-h urine protein (24-h UP), C3, C4, C-reactive protein, and creatinine (Cr) showed no differences either.

In addition, differences in the proportion of various immune cells in the peripheral blood between the two groups was detected. The results showed that the number of B cells was higher in the low-cognition group ( $0.15 \pm 0.16\%$  vs  $0.10 \pm 0.13\%$ ;  $P < 0.05$ ), but no difference was found in the numbers of erythrocytes, WBCs, CD3<sup>+</sup> cells, CD3<sup>+</sup>CD4<sup>+</sup> cells, CD3<sup>+</sup>CD8<sup>+</sup> cells, and natural killer cells between the groups (Table 4). As shown in Table 4, the serum levels of anti-dsDNA antibodies ( $P < 0.05$ ) and IgM ( $P < 0.01$ ) were both higher in patients with low cognition. However, no statistically significant differences in the positive rates of anti-Sm

antibodies, anti-RNP antibodies, anti-SSA antibodies, anti-SSB antibodies, anti-Rib P antibodies, and anti- $\beta_2$ GPI antibodies, as well as the levels of IgG, IgA, and IgE, were found between the two groups.

#### Correlation analysis between cognitive function and F-T3, F-T4, and lipid metabolism-related protein levels

Studies have indicated that a significantly higher prevalence of thyroid autoantibodies has been observed in patients with SLE than in HCs [44, 45]. Many studies have attempted to associate thyroid abnormalities with clinical findings of SLE, but there has been no unified conclusion [46–48]. This study explored the relationships between serum F-T3 and F-T4 levels and cognitive functions in the patients with SLE. A regression analysis revealed that serum F-T3 levels positively correlated with immediate memory performance, including list learning ( $r = 0.293$ ,  $P < 0.05$ ; Fig. 2A) and immediate story recall ( $r = 0.269$ ,  $P < 0.05$ ; Fig. 2B). Moreover, figure copy ( $r = 0.321$ ,  $P < 0.05$ ; Fig. 2C), digit span ( $r = 0.285$ ,  $P < 0.05$ ; Fig. 2D), list recall ( $r = 0.187$ ,  $P < 0.05$ ; Fig. 2E), list recognition ( $r = 0.245$ ,  $P < 0.01$ ; Fig. 2F), and delayed story recall ( $r = 0.258$ ,  $P < 0.05$ ; Fig. 2G) scores also positively correlated with F-T3 levels. Serum F-T4 levels positively correlated with nine items ( $0.275 \leq r \leq 0.417$ ; all  $P < 0.05$ ; Fig. 2H–P), including list learning, immediate story

**Table 3** Demographic features, clinical manifestations, and treatment of SLE patients

SLE characteristics	Low Cognition (n = 48)	High Cognition (n = 33)	P Value
<b>Demographic</b>			
Age, (years)	34.67 (±12.03)	32.23 (±10.98)	0.3530
Females, n (%)	40 (83.33%)	30 (90.90%)	0.763
Education, (years)	10.77 (±3.64)	13.26 (±3.21)	< 0.01**
SLEDAI, mean ± (SD)	13.91 (±11.79)	9.38 (±5.79)	< 0.05*
Disease duration, (month)	61.01 (±59.69)	77.61 (±65.3)	0.2486
<b>Clinical chart review (%)</b>			
Rash, (%)	10 (21.28%)	6 (18.18%)	0.768
Mucosal ulcers, (%)	2 (4.26%)	1 (3.03%)	1.000
Haematuria, (%)	22 (46.81%)	13 (39.33%)	0.510
Proteinuria, (%)	22 (46.81%)	13 (39.33%)	0.510
Pyuria, (%)	14 (39.79%)	11 (33.33%)	0.736
Arthritis, (%)	8 (17.02%)	5 (15.15%)	0.823
Vasculitis, (%)	4 (8.51%)	0 (0%)	0.231
Pleurisy, (%)	1 (2.13%)	1 (3.03%)	1.00
Pericarditis, (%)	1 (2.13%)	0 (%)	1.00
Low complement, (%)	36 (76.60%)	27 (81.82%)	0.574
Anaemia, (%)	11 (23.40%)	1 (3.03%)	< 0.05*
Thrombocytopenia, (%)	11 (23.40%)	4 (12.12)	0.203
Leukopenia, (%)	11 (23.40%)	7 (21.21%)	0.817
Lupus nephritis, (%)	19 (40.43%)	20 (60.61%)	0.075
Neurological disorder, (%)	6 (12.77%)	5 (15.15%)	1.00
<b>Current medication (%)</b>			
Prednisone (%)	31 (64.58%)	18 (54.54%)	0.425
Hydroxychloroquine (%)	29 (61.70%)	19 (57.58%)	0.711
Cyclophosphamide (%)	5 (10.64%)	3 (9.09%)	1.000
Azathioprine (%)	1 (2.13%)	1 (3.03%)	1.000
Methotrexate (%)	2 (4.26%)	2 (6.06%)	1.000
Cyclosporine (%)	0 (0%)	2 (6.06%)	0.326

Data are expressed as number (percentage). P values are based on Chi-square test for normally distributed variables. \*P < 0.05, \*\*P < 0.01, vs. Low Cognition. The SPSS Statistics 16.0 software were used for statistical analysis

recall, figure copy, digit span, coding, list recall, list recognition, delayed story recall, and figure recall scores.

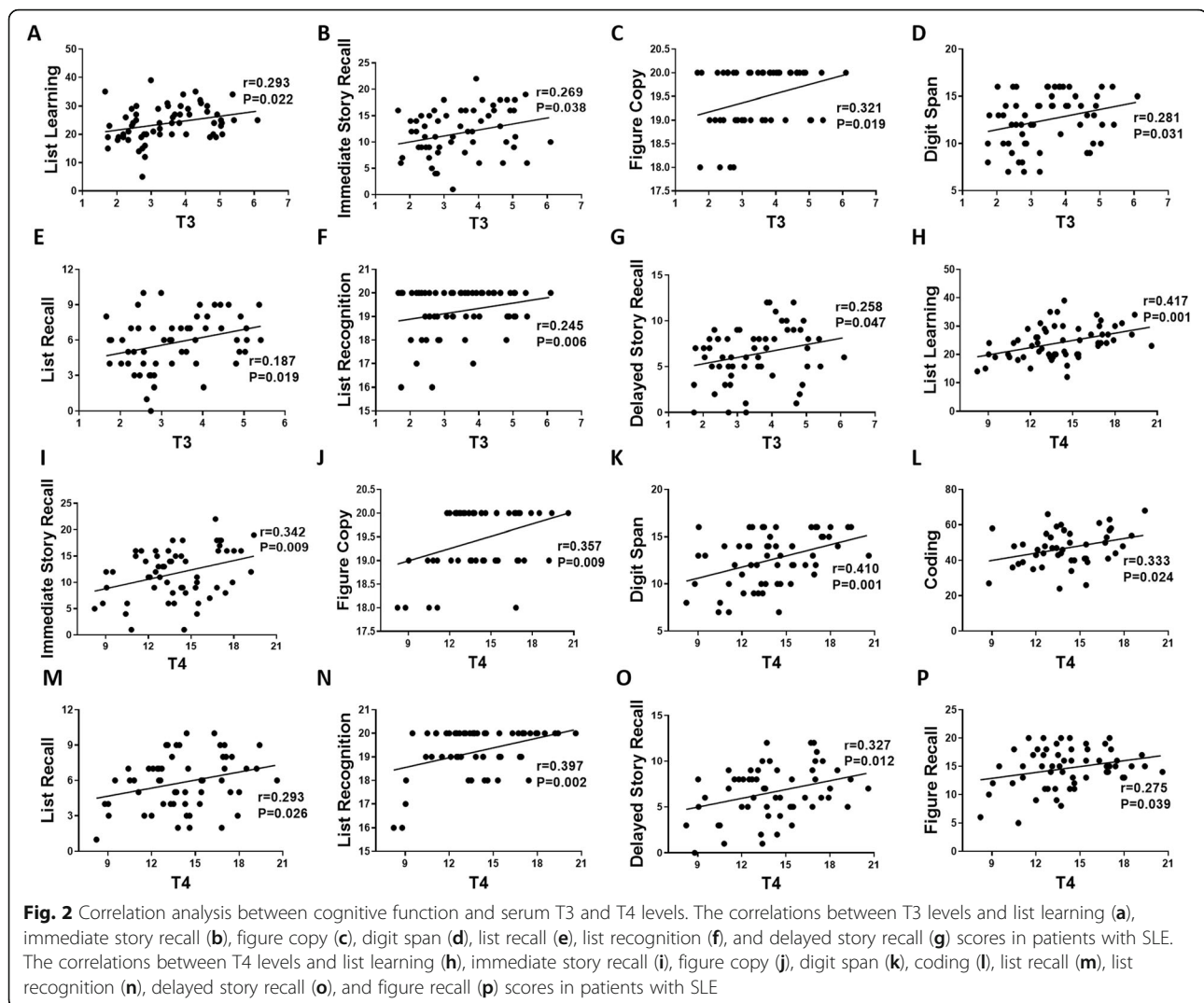
The above results indicated that F-T3 and F-T4 levels positively correlated with most cognitive functions. Increasing evidence has shown that thyroid hormones (mainly T3 and T4) are involved in all aspects of lipid metabolism [49–51]. Moreover, lipid metabolism was markedly altered in patients with SLE [24]. We urgently wanted to know whether lipoproteins were related to cognitive dysfunction in SLE, and then we analysed the correlation between HDL-C and LDL-C and cognition. The results showed that HDL-C levels were only significantly positively correlated with immediate story memory ( $r = 0.081$ ,  $P < 0.05$ ) and delay story recall ( $r = 0.052$ ,  $P < 0.05$ ) scores, while LDL-C levels showed no

correlation with any of the 12 cognitive subitems (Supplementary Fig. 1). In our previous study, we found that the plasma apolipoprotein (APOE and APOA1), IGF-1 and IGFBP7 levels were significantly different between NPSLE and SLE patients [52], implying that they might be related to neuropsychiatric manifestations. It is well known that apolipoproteins are involved in the composition and transportation of lipid particles [53]. We were surprised to find that IGF-1 and IGFBP7 could also regulate the abnormal metabolism of lipids [54, 55]. Then, the serum of 81 patients was collected for ELISA to detect the expression of the above four lipid metabolism-related proteins, and the correlations between lipid metabolism measures and cognitive dysfunction in patients with SLE was analysed. The results

**Table 4** Comparison of clinical and laboratory characteristics of SLE patients

SLE characteristics	Low Cognition (n = 48)	High Cognition (n = 33)	P Value
<b>Clinical characteristics</b>			
Globulin, mg/dL	28.18 (±7.97)	27.94 (±6.59)	0.764
Albumin, mg/dL	31.76 (±5.79)	34.91 (±4.13)	< 0.01**
24-h urine protein, (g/24 h)	1.97 (±2.59)	1.88 (±3.11)	0.433
C3 Levels, mg/dL	0.66 (±0.32)	0.77 (±0.29)	0.143
C4 Levels, mg/dL	0.12 (±0.08)	0.14 (±0.06)	0.323
LDL-C (mmol/L)	2.77 (±1.37)	2.61 (±1.10)	0.590
HDL-C (mmol/L)	1.12 (±0.39)	1.33 (±0.55)	0.051
CRP (mg/dL)	12.36 (±14.00)	11.95 (±16.98)	0.869
D-dimer (mg/dL)	1.74 (±1.28)	0.75 (±0.82)	< 0.001***
Cr (μmol/L)	86.95 (±80.42)	66.07 (±36.13)	0.200
BUN (mmol/L)	8.04 (±5.66)	7.07 (±4.69)	0.491
UA (μmol/L)	362.20 (±129.73)	339.38 (±142.41)	0.523
GFR (mL/min/1.73 m <sup>2</sup> )	117.37 (±56.97)	140.31 (±83.36)	0.223
ESR (mm/hour)	50.53 (±32.03)	42.59 (±28.74)	0.271
PLT (10 <sup>9</sup> /L)	149.32 (±79.69)	176.09 (±90.84)	0.099
TSH (mU/L)	2.78 (±2.31)	2.69 (±2.21)	0.830
FT3 Levels (pmol/L)	3.20 (±1.03)	3.71 (±1.06)	< 0.05*
FT4 Levels (pmol/L)	12.51 (±3.43)	14.97 (±2.14)	< 0.05*
<b>Blood Cells</b>			
Erythrocyte, (%)	68.66 (±118.01)	40.23 (±66.60)	0.419
WBC, (10 <sup>9</sup> /L)	4.73 (±2.42)	5.43 (±3.62)	0.255
CD3+ cells, (%)	0.73 (±0.50)	0.67 (±0.40)	0.605
CD3 + CD4+ cells, (%)	0.33 (±0.22)	0.30 (±0.23)	0.591
CD3 + CD8+ cells, (%)	0.39 (±0.29)	0.36 (±0.19)	0.563
B cells, (%)	0.15 (±0.16)	0.10 (±0.13)	< 0.05*
NK cells, (%)	0.06 (±0.06)	0.06 (±0.04)	0.929
<b>Autoantibodies</b>			
Anti-dsDNA antibodies, U/mL	746.12 (±441.82)	314.56 (±223.99)	< 0.05*
Anti-Sm antibodies, n (%)	10 (21.28%)	8 (24.24%)	0.754
Anti-RNP antibodies, n (%)	16 (34.04%)	13 (39.39%)	0.624
Anti-SSA antibodies, n (%)	19 (40.43%)	14 (42.42%)	0.858
Anti-SSB antibodies, n (%)	4 (8.51%)	2 (6.06%)	1.000
Anti-Rib-P, n (%)	10 (21.28%)	11 (33.33%)	0.228
Anti-β2-GPI, n (%)	1 (2.13%)	0 (0%)	1.000
IgM (mg/dL)	1.13 (±0.72)	0.76 (±0.41)	< 0.01**
IgG (mg/dL)	14.52 (±6.79)	12.56 (±5.34)	0.172
IgA (mg/dL)	2.49 (±1.60)	2.56 (±1.19)	0.857
IgE (mg/dL)	0.26 (±0.44)	0.23 (±0.41)	0.620

Data are expressed as number (percentage), or mean ± standard deviation (SD) values. P values are based on independent sample t-test and Chi-square test for normally distributed variables. \*P < 0.05, \*\*P < 0.01, \*\*\* P < 0.005, vs. Low Cognition. The Graph Pad Prism 7.0 and SPSS Statistics 16.0 software were used for statistical analysis

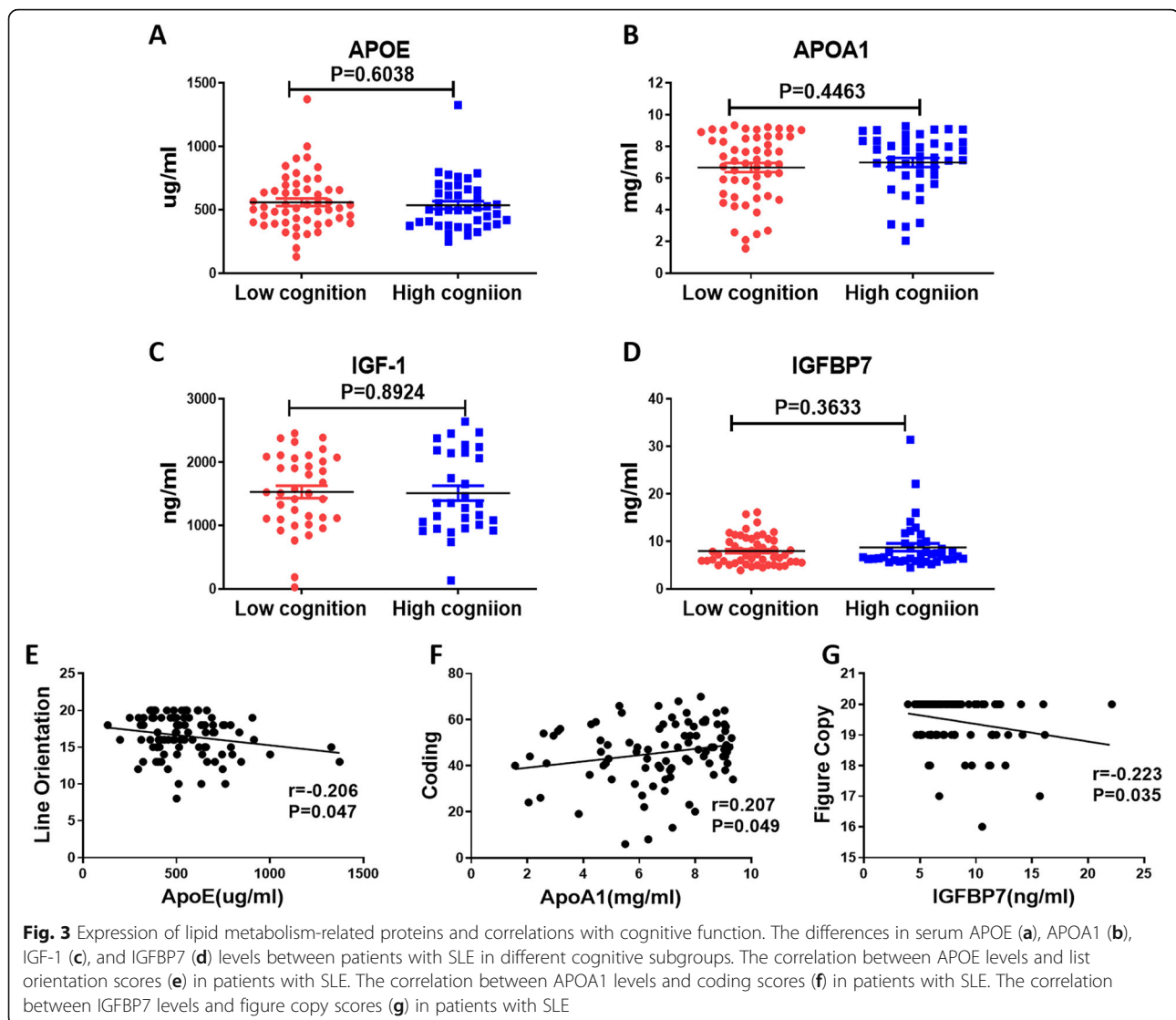


showed no significant differences in the expression of these four proteins between the two groups (Fig. 3A-D). We found that serum APOE levels significantly negatively correlated with line orientation scores ( $r = -0.206$ ,  $P < 0.05$ ; Fig. 3E), whereas APOA1 levels showed a positive correlation with coding scores ( $r = -0.207$ ,  $P < 0.05$ ; Fig. 3G). In addition, serum IGFBP7 levels negatively correlated with figure recall scores ( $r = -0.223$ ,  $P < 0.05$ ; Fig. 3F), while IGF-1 levels showed no correlation with any cognitive measure. Considering that the characteristics of SLE are high levels of autoantibodies and damage to multiple organs [56], abnormal immunoglobulin levels have been observed in many patients [57–59]. We also analysed the correlations between cognitive function and serum levels of IgG, IgM and albumin. The results showed that IgG and IgM were both related to six subtests of cognition, while albumin correlated with five subtests of cognition (Supplementary Fig. 2).

## Discussion

In the present study, cognitive function was lower in patients with SLE than in HCs. Meanwhile, lower education, higher SLEDAI scores, lower albumin, F-T3, and F-T4 levels, and higher D-dimer, anti-dsDNA antibodies, and IgM levels were found in patients with low cognition than in those with high cognition. In addition, cognitive function was closely associated with the IgG, IgM, albumin, F-T3, and F-T4 levels in patients. In addition to these findings, APOE, APOA1, IGF-1 and IGFBP7 levels were detected by ELISA. Although the expression levels of these four proteins did not show any difference between the high- and low-cognition SLE patients, correlations between cognition and APOE, APOA1, and IGFBP7 levels have been revealed. An important finding of the present study was that the abnormal levels of serum levels of F-T3 and F-T4 and APOE, APOA1, and IGFBP7 might be associated with cognitive dysfunction in patients with SLE.





NP is a severe complication of SLE that results in severe neurodegenerative changes and threatens life [60]. A variety of neurological manifestations characterize NP, making the diagnosis of NPSLE a formidable challenge for rheumatologists [61, 62]. Patients with NPSLE have had multiple NP events, of which 91.2% affected the CNS, including cognitive dysfunction, headache, mood disorder, seizures, anxiety, and psychoses. The most common clinical manifestation has been cognitive dysfunction, which occurred in 42.1% of patients [63]. In addition, nervous system involvement was the initial presentation of SLE, while more than 50% of NP occurred within the first 5 years after the onset of SLE [63]. Such findings indicate that patients with SLE were likely to experience cognitive dysfunction before the diagnosis of NPSLE. Therefore, our study recruited 121 patients with SLE and 65 HCs for cognitive assessment using the RBANS. The results showed that before the diagnosis of NPSLE, the cognitive functions of patients with SLE,

including immediate memory, visuospatial/constructional, attention, and delayed memory, were significantly lower than the cognitive functions of HCs. Compared with the HCs, the patients with SLE had a worse response in the lingual gyrus, which has been associated with visual attention, visual encoding/processing, and working memory [64, 65]. This finding might explain why patients with SLE performed worse on attention, memory, and visuospatial/constructional memory tasks.

SLE is a prototypic autoimmune disease caused by the loss of B cell tolerance, subsequent recognition of self-antigens and becoming autoreactive [66, 67]. In this study, the proportion of B cells did not unexpectedly increase in patients. Additionally, B cell hyperreactivity could induce an accumulation of autoreactive plasma cells [68] and secrete a variety of autoantibodies, including anti-dsDNA, anti-Sm, anti-Ro, anti-SSA, anti-SSB, anti-Rib-P, and anti- $\beta$ 2-GPI, to mediate the occurrence

of SLE [69]. Compared with the high-cognition group, the levels of anti-dsDNA and IgM were clearly increased in the low-cognition group, but the levels of anti-Sm, anti-RNP, anti-SSA, anti-SSB, anti-Rib-P, anti- $\beta$ 2-GPI, IgG, IgA, and IgE all showed no differences. The cerebrospinal fluid (CSF)/serum quotient of albumin, known as quotient albumin (Q albumin), is widely accepted as a biomarker for estimating blood–brain barrier (BBB) function [70]; the BBB plays a critical role in the pathogenesis of NPSLE [71]. In the present study, the plasma albumin level, as a biomarker of disease activity in SLE [72], was lower in the low-cognition group. The results indicated that the changes in serum IgM, dsDNA, and albumin levels might be associated with cognitive dysfunction in patients with SLE. As expected, IgM levels showed negative correlations with cognitive function, albumin positively correlated with cognitive function, but dsDNA showed no correlation.

The association between thyroid disease and SLE was reported more than 50 years ago [73]. Both hypothyroidism and thyroid nodules are found more frequently in patients with SLE than in the general population [45]. In fact, the incidence rate of thyroid cancer is twice as prevalent in patients with SLE as in those without SLE [74]. In recent years, the impact of serum thyroxine on cognitive function has gradually attracted widespread attention, but no consistent conclusions have been drawn. A study on mild cognitive impairment and dementia showed that patients with relatively high T3 levels showed impairments in memory and visuospatial and executive functions [75]. However, patients with acute coronary syndrome and low T3 levels had a poorer health-related quality of life (including general health, social functioning, and role emotional) than those with normal levels at a 1-year follow-up [76]. A study on subjective cognitive decline showed that higher T3 levels were associated with better verbal memory performance (immediate and delayed recall tasks) in APOE  $\epsilon$ 4 carriers [77]. Our results showed that T3 and T4 levels were lower in patients with low cognition, and significant positive correlations were found between T3 and T4 levels and cognitive function, which was consistent with the aforementioned views and support the notion that T3 and T4 protected cognitive functions.

Dyslipidaemia is one of the major risk factors for SLE, leading to a high prevalence of premature atherosclerosis and coronary artery disease in patients with SLE [78, 79]. Impaired renal function is now known to be associated with dyslipidaemia [80, 81]. In addition, thyroid hormones influence all aspects of lipid metabolism; in particular, T3 induces LDL receptor gene expression and enhances LDL clearance [82]. A report also revealed that low free T3 levels were an independent risk factor for dyslipidaemia in patients with SLE [83]. Moreover, plasma lipoprotein metabolism is regulated and

controlled by specific apolipoprotein constituents of the various lipoprotein classes [84, 85]. Apolipoproteins function in the regulation of lipoprotein metabolism through their involvement in the transport and redistribution of lipids among various cells and tissues, through their role as cofactors for enzymes of lipid metabolism, or through their maintenance of the structure of the lipoprotein particles [86]. An increasing number of studies have shown that apolipoproteins are involved in the occurrence of neuroinflammation. For example, APOE4 contributes to Alzheimer's disease (AD) pathogenesis by modulating the metabolism, aggregation, and toxicity of amyloid- $\beta$  peptide, tauopathy, synaptic plasticity, lipid transport, glucose metabolism, mitochondrial function, vascular integrity and so on [84, 87]. The present study did not show a difference in the expression of serum lipoproteins (i.e., APOE and APOA1) between the two groups, but the correlation analysis showed that APOE levels negatively correlated with line orientation scores and that APOA1 levels positively correlated with coding scores. Four years ago, an interesting result was reported: brain conditional APOE knockout (bKO) mice had synaptic loss and cognitive dysfunction, which was similar to that in total APOE KO mice, but (bKO) mice did not show the learning and memory impairment that had been observed in APOE KO mice [88]. These results indicated that the cognitive impairment in mice was specifically caused by systemic lipid metabolism. In AD, accelerated cognitive decline and an abnormal internal environment, structure, and function of the brain were also found in APOE  $\epsilon$ 4 carriers [89]. APOA1 is responsible for transporting cholesterol to the liver. It is a critical component in the formation of HDL. The overexpression of *APOA1* might effectively inhibit the age-related decline in memory and learning ability [90, 91]. Moreover, Kawano et al. found that the levels of APOA1 were strikingly lower in a group of late-onset nonfamilial AD [92]. These studies and our present research both suggested a positive correlation between APOA1 levels and cognitive functions. IGF-1 is an essential neurotrophic factor produced both peripherally and in the brain, and adequate levels of serum IGF-1 might be necessary for normal cognitive functioning [93, 94]. Serum IGF-1 levels were significantly elevated in patients with SLE and inversely correlated with age [95]. Shankar et al. supported the notion that both high and low levels of IGF-1 might induce poor cognitive function and that optimal levels of IGF-1 might be associated with better cognitive function [96]. However, in our study, IGF-1 did not differ between the high-cognition and low-cognition SLE patients, and there were no correlations between IGF-1 levels and 12 cognitive items. IGFBP7 is a protein belonging to the IGFBP superfamily that acts as a transporter of IGFs, lengthens their half-

life, and regulates their access to their receptors [97]. In a new study in 2021, IGFBP7 was reported to be related to lipid metabolism in nonalcoholic fatty liver disease (NAFLD) [55]. In addition, it is also involved in the development of a variety of brain diseases [98–100]. In our results, IGFBP7 showed a negative correlation with figure copy scores, indicating that IGFBP7 might be related to visuospatial/constructional dysfunction in patients with SLE.

## Conclusions

In conclusion, the findings indicated that F-T3 and F-T4 levels were lower in patients with low cognition, and cognitive function was associated with T3, T4, APOE and APOA1 levels in patients with SLE. The results suggested that F-T3 and F-T4 could be used in clinical practice as biomarkers for cognitive dysfunction in patients with SLE.

## Abbreviations

SLE: Systemic lupus erythematosus; NPSLE: Neuropsychiatric SLE; CNS: Central nervous system; LDL: Low-density lipoprotein; HDL: High-density lipoprotein; NTIS: No thyroidal illness syndrome; F-T3: Free triiodothyronine; F-T4: Free thyroxine; TSH: Thyroid-stimulating hormone; ACR: American College of Rheumatology; SLEDAI: SLE disease activity index; RBANS: Repeatable battery for the assessment of neuropsychological status; MMPI: Minnesota multiphasic personality inventory; CRP: C-reactive protein; Cr: Creatinine; BUN: Blood urea nitrogen; UA: Uric acid; GFR: Glomerular filtration rate; ESR: Erythrocyte sedimentation rate; PLT: Platelets; TSH: Thyroid stimulating hormone; CSF: Cerebrospinal fluid; BBB: Blood–brain barrier; APOE: Apolipoprotein E; APOA1: Apolipoprotein A1; IGF-1: Insulin-Like growth factor-1; IGFBP7: Insulin-like growth factor binding protein 7; AD: Alzheimer's disease

## Supplementary Information

The online version contains supplementary material available at <https://doi.org/10.1186/s41927-021-00190-7>.

**Additional file 1.** The correlation analysis between cognitive function and HDL, IgG, IgM, Albumin serum levels. **Supplementary Figure 1** Correlation analysis between cognitive function and HDL. Correlation between HDL-C and Immediate story recall (A) and delayed story recall (B) in patients with SLE. **Supplementary Figure 2** Correlation analysis between cognitive function and IgG, IgM, and albumin levels. Correlation analysis between cognitive function and IgG, IgM, and albumin levels.

## Acknowledgements

Not applicable.

## Authors' contributions

Huan Dou, Yayi Hou and Jun Liang conceived and designed the project. Li Lu, Jinglei Chen and Wei Kong performed the experiments, analyzed the data. Huan Dou, Kangxing Zhou, Wei Kong and Jun Liang interpreted the patient data. Li Lu, wrote the manuscript, and Huan Dou and Jun Liang revised the manuscript. All authors read and approved the final manuscript.

## Funding

The present work was supported by the Natural Science Foundation of China (32070883, 31872732, 81871319 and 81801555), Jiangsu Province Six Talent Peaks Project (YY-021), Jiangsu Province key Social and Development R&A Grant (BE2019706 and BE2019617), Jiangsu Provincial Medical Youth Talent (QNRC2016005) and Research Project of Jiangsu Province Health Committee (H2019060).

## Availability of data and materials

The datasets generated during and analyzed during the current study are not publicly available due to respect participants' rights to privacy and to protect their identity, but are available from the corresponding author on reasonable request.

## Declarations

### Ethics approval and consent to participate

This research was approved by the Ethics Committee at The Affiliated Drum Tower Hospital of Nanjing University Medical School (ID: SC201700201) and was undertaken according to the guidelines of the Declaration of Helsinki. All recruited patients and healthy controls signed informed consent forms.

### Consent for publication

Not applicable.

### Competing interests

The authors declare that they have no competing interests.

### Author details

<sup>1</sup>Department of Rheumatology and Immunology, Nanjing Drum Tower Hospital, The Affiliated Hospital of Nanjing University Medical School, Nanjing 210008, PR China. <sup>2</sup>The State Key Laboratory of Pharmaceutical Biotechnology, Division of Immunology, Medical School, Nanjing University, Nanjing 210093, PR China. <sup>3</sup>Jiangsu Key Laboratory of Molecular Medicine, Nanjing 210093, PR China.

Received: 24 November 2020 Accepted: 11 March 2021

Published online: 09 June 2021

## References

- Tsokos GC, Lo MS, Costa Reis P, Sullivan KE. New insights into the immunopathogenesis of systemic lupus erythematosus. *Nat Rev Rheumatol*. 2016;12(12):716–30. <https://doi.org/10.1038/nrrheum.2016.186>.
- Gulinello M, Wen J, Putterman C. Neuropsychiatric symptoms in lupus. *Psychiatr Ann*. 2012;42(9):322–8. <https://doi.org/10.3928/00485713-20120906-05>.
- Jarpa E, Babul M, Calderón J, González M, Martínez ME, Bravo-Zehnder M, et al. Common mental disorders and psychological distress in systemic lupus erythematosus are not associated with disease activity. *Lupus*. 2011; 20(1):58–66. <https://doi.org/10.1177/0961203310381773>.
- Unterman A, Nolte JE, Boaz M, Abady M, Shoenfeld Y, Zandman-Goddard G. Neuropsychiatric syndromes in systemic lupus erythematosus: a meta-analysis. *Semin Arthritis Rheum*. 2011;41(1):1–11. <https://doi.org/10.1016/j.semarthrit.2010.08.001>.
- Borowoy AM, Pope JE, Silverman E, Fortin PR, Pineau C, Smith CD, et al. Neuropsychiatric lupus: the prevalence and autoantibody associations depend on the definition: results from the 1000 faces of lupus cohort. *Semin Arthritis Rheum*. 2012;42(2):179–85. <https://doi.org/10.1016/j.semarthrit.2012.03.011>.
- Chen C, Geng L, Xu X, Kong W, Hou Y, Yao G, Feng X, Zhang H, Liang J. Comparative proteomics analysis of plasma protein in patients with neuropsychiatric systemic lupus erythematosus. 2020;8(9):579. <https://doi.org/10.21037/atm.2020.04.58>.
- Hanly JG. Diagnosis and management of neuropsychiatric SLE. *Nat Rev Rheumatol*. 2014;10(6):338–47. <https://doi.org/10.1038/nrrheum.2014.15>.
- Govoni M, Bortoluzzi A, Padovan M, Silvagni E, Borrelli M, Donelli F, et al. The diagnosis and clinical management of the neuropsychiatric manifestations of lupus. *J Autoimmun*. 2016;74:41–72. <https://doi.org/10.1016/j.jaut.2016.06.013>.
- Sutin AR, Stephan Y, Luchetti M, Terracciano A, et al. Five-factor model personality traits and cognitive function in five domains in older adulthood. *BMC Geriatr*. 2019;19(1):343. <https://doi.org/10.1186/s12877-019-1362-1>.
- Shyu YI, Yip PK. Factor structure and explanatory variables of the minimal state examination (MMSE) for elderly persons in Taiwan. *J Formos Med Assoc*. 2001;100(10):676–83.
- Nasreddine ZS, Phillips NA, Bedirian V, et al. The Montreal cognitive assessment, MoCA: a brief screening tool for mild cognitive impairment. *J Am Geriatr Soc*. 2005;53(4):695–9. <https://doi.org/10.1111/j.1532-5415.2005.53221.x>.

12. Galvin JE, Roe CM, Powlisha KK, et al. The AD8: a brief informant interview to detect dementia. *Neurology*. 2005;65(4):559–64. <https://doi.org/10.1212/01.wnl.0000172958.95282.2a>.
13. Li H, Zhang T, Yu TC, Lin CC, Wong AMK. Combine wireless sensor network and multimedia technologies for cognitive function assessment. In: Proceedings of the third international conference on intelligent control and information processing (ICICIP); 2012. p. 717–20.
14. Goette WF, Schmitt AL. Examination of regression-based discrepancy scores for the RBANS in detecting cognitive impairment from an archival sample. *Arch Clin Neuropsychol*. 2019;34(8):1329–39. <https://doi.org/10.1093/arclin/acy100>.
15. Gogos A, Joshua N, Rossell SL. Use of the repeatable battery for the assessment of neuropsychological status (RBANS) to investigate group and gender differences in schizophrenia and bipolar disorder. *Aust N Z J Psychiatry*. 2010;44(3):220–9. <https://doi.org/10.3109/00048670903446882>.
16. Beatty WW. RBANS analysis of verbal memory in multiple sclerosis. *Arch Clin Neuropsychol*. 2004;19(6):825–34. <https://doi.org/10.1016/j.acn.2003.12.001>.
17. Gaita F, Corsinovi L, Anselmino M, Raimondo C, Pianelli M, Toso E, et al. Prevalence of silent cerebral ischemia in paroxysmal and persistent atrial fibrillation and correlation with cognitive function. *J Am Coll Cardiol*. 2013; 62(21):1990–7. <https://doi.org/10.1016/j.jacc.2013.05.074>.
18. Quon RJ, Mazanec MT, Schmidt SS. Antiepileptic drug effects on subjective and objective cognition. *Epilepsy Behav*. 2020;104(Pt A):106906. <https://doi.org/10.1016/j.yebeh.2020.106906>. Epub 2020 Jan 29.
19. Gold JM, Queen C, Lannone VN. Repeatable battery for the assessment of neuropsychological status as a screening test in schizophrenia I: sensitivity, reliability, and validity. *Am J Psychiatry*. 1999;156(12):1944–50. <https://doi.org/10.1176/ajp.156.12.1944>.
20. Hobart MP, Goldberg R, Bartko JJ, Gold JM. Repeatable battery for the assessment of neuropsychological status as a screening test in schizophrenia, II: convergent/discriminant validity and diagnostic group comparisons. *Am J Psychiatry*. 1999;156(12):1951–7. <https://doi.org/10.1176/ajp.156.12.1951>.
21. Wilk CM, Gold JM, Bartko JJ, et al. Test-retest stability of the repeatable battery for the assessment of neuropsychological status in schizophrenia. *Am J Psychiatry*. 2002;159(5):838–44. <https://doi.org/10.1176/appi.ajp.159.5.838>.
22. Amaya-Amaya J, Sarmiento-Monroy JC, Caro-Moreno J, et al. Cardiovascular disease in latin american patients with systemic lupus erythematosus: a cross-sectional study and a systematic review. *Autoimmune Dis*. 2013;2013: 794383. <https://doi.org/10.1155/2013/794383>. Epub 2013 Nov 3.
23. Amaya-Amaya J, Sarmiento-Monroy JC, Caro-Moreno J, Molano-Gonzalez N, Mantilla RD, Rojas-Villarraga A, et al. Cardiovascular disease in latin american patients with systemic lupus erythematosus: a cross-sectional study and a systematic review. *Autoimmune Dis*. 2013;2013:7943. <https://doi.org/10.1155/2013/794383>. Epub 2013 Nov 3.
24. Borba EF, Bonfá E. Dyslipoproteinemias in systemic lupus erythematosus: influence of disease, activity, and anticholesterol antibodies. *Lupus*. 1997;6(6): 533–9. <https://doi.org/10.1177/096120339700600610>.
25. Muenchhoff J, Song F, Poljak A, et al. Plasma apolipoproteins and physical and cognitive health in very old individuals. *Neurobiol Aging*. 2017;55:49–60. <https://doi.org/10.1016/j.neurobiolaging.2017.02.017>.
26. Karimi SA, Salehi I, Komaki A, Sarihi A, Zarei M, Shahidi S. Effect of high-fat diet and antioxidants on hippocampal long-term potentiation in rats: an in vivo study. *Brain Res*. 2013;1539:1–6. <https://doi.org/10.1016/j.brainres.2013.09.029>.
27. Lindqvist A, Mohapel P, Bouter B, Frielingsdorf H, Pizzo D, Brundin P, et al. High-fat diet impairs hippocampal neurogenesis in male rats. *Eur J Neurol*. 2006;13(12):1385–8. <https://doi.org/10.1111/j.1468-1331.2006.01500.x>.
28. Wu A, Molteni R, Ying Z, Gomez-Pinilla F. A saturated-fat diet aggravates the outcome of traumatic brain injury on hippocampal plasticity and cognitive function by reducing brain-derived neurotrophic factor. *Neuroscience*. 2003; 119(2):365–75. [https://doi.org/10.1016/S0306-4522\(03\)00154-4](https://doi.org/10.1016/S0306-4522(03)00154-4).
29. Neto AM, Zantut-Wittmann DE. Abnormalities of thyroid hormone metabolism during systemic illness: the low T3 syndrome in different clinical settings. *Int J Endocrinol*. 2016;2016:2157583. <https://doi.org/10.1155/2016/2157583>.
30. Wataid A, Mahroum N, Whitby A, Gertel S, Comaneshter D, Cohen AD, et al. Hypothyroidism among SLE patients: case-control study. *Autoimmun Rev*. 2016;15(5):484–6. <https://doi.org/10.1016/j.autrev.2016.01.019>.
31. Pingitore A, Galli E, Barison A, Iervasi A, Scarlattini M, Nucci D, et al. Acute effects of triiodothyronine (T3) replacement therapy in patients with chronic heart failure and low-T3 syndrome: a randomized, placebo-controlled study. *J Clin Endocrinol Metab*. 2008;93(4):1351–8. <https://doi.org/10.1210/jc.2007-2210>.
32. Zhu X, Cheng SY. New insights into regulation of lipid metabolism by thyroid hormone. *Curr Opin Endocrinol Diabetes Obes*. 2010;17(5):408–13. <https://doi.org/10.1097/MED.0b013e32833d6d46>.
33. Heinrich TW, Grahm G. Hypothyroidism presenting as psychosis: myxedema madness revisited prim care companion. *J Clin Psychiatry*. 2003;5(6):260–6. <https://doi.org/10.4088/pcc.v05n0603>.
34. Smith CD, Grondin R, LeMaster W, Martin B, Gold BT, Ain KB. Reversible cognitive, motor, and driving impairments in severe hypothyroidism. *Thyroid*. 2015;25(1):28–36. <https://doi.org/10.1089/thy.2014.0371>.
35. Smith EL, Shmerling RH. The American College of Rheumatology criteria for the classification of systemic lupus erythematosus: strengths, weaknesses, and opportunities for improvement. *Lupus*. 1999;8(8):586–95. <https://doi.org/10.1191/096120399680411317>.
36. Gladman DD, Ibanez D, Urowitz MB. Systemic lupus erythematosus disease activity index 2000. *J Rheumatol*. 2002;29(2):288–91.
37. Hanly JG. ACR classification criteria for systemic lupus erythematosus: limitations and revisions to neuropsychiatric variables. *Lupus*. 2004;13(11): 861–4. <https://doi.org/10.1191/0961203304lu20240a>.
38. Hay EM, Black D, Huddy A, Creed F, Tomenson B, Bernstein RM, et al. Psychiatric disorder and cognitive impairment in systemic lupus erythematosus. *Arthritis Rheum*. 1992;35(4):411–6. <https://doi.org/10.1002/art.1780350409>.
39. Kozora E, Thompson LL, West SG, Kotzin BL. Analysis of cognitive and psychological deficits in systemic lupus erythematosus patients without overt central nervous system disease. *Arthritis Rheum*. 1996;39(12):2035–45. <https://doi.org/10.1002/art.1780391213>.
40. Hahn RC, Petti DB. Minnesota multiphasic personality inventory-rated depression and the incidence of breast cancer. *Cancer*. 1988;61(4):845–8. [https://doi.org/10.1002/1097-0142\(19880215\)61:4<845::AID-CNCR2820610434>3.0.CO;2-Q](https://doi.org/10.1002/1097-0142(19880215)61:4<845::AID-CNCR2820610434>3.0.CO;2-Q).
41. Randolph C, Tierney MC, Mohr E, Chase TN. The repeatable battery for the assessment of neuropsychological status (RBANS): preliminary clinical validity. *J Clin Exp Neuropsychol*. 1998;20(3):310–9. <https://doi.org/10.1076/jcen.20.3.310.823>.
42. Zhang BH, Tan YL, Zhang WF. Repeatable battery for the assessment of neuropsychological status as a screening test in Chinese: reliability and validity. *Chin Ment Health J*. 2009;22(12):865–9.
43. Huang Q, Shen S, Hang Q, et al. Expression of HMGB1 and TLR4 in neuropsychiatric systemic lupus erythematosus patients with seizure disorders. *Ann Transl Med*. 2020;8(1):9. <https://doi.org/10.21037/atm.2019.12.44>.
44. Weetman AP, Walport MJ. The association of autoimmune thyroiditis with systemic lupus erythematosus. *Br J Rheumatol*. 1987;26(5):359–61. <https://doi.org/10.1093/rheumatology/26.5.359>.
45. Miller FW, Moore GF, Weintraub BD, Steinberg AD. Prevalence of thyroid disease and abnormal thyroid function test results in patients with systemic lupus erythematosus. *Arthritis Rheum*. 1987;30(10):1124–31. <https://doi.org/10.1002/art.1780301006>.
46. Magaro M, Zoli A, Altomonte L, Mironi L, La Sala L, Barini A, et al. The association of silent thyroiditis with active systemic lupus erythematosus. *Clin Exp Rheumatol*. 1992;10(1):67–70.
47. Appenzeller S, Pallone AT, Natalin RA, Costallat LT. Prevalence of thyroid dysfunction in systemic lupus erythematosus. *J Clin Rheumatol*. 2009;15(3): 117–9. <https://doi.org/10.1097/RHU.0b013e31819d8be4c>.
48. Kumar K, Kole AK, Karmakar PS, Ghosh A. The spectrum of thyroid disorders in systemic lupus erythematosus. *Rheumatol Int*. 2012;32(1):73–8. <https://doi.org/10.1007/s00296-010-1556-5>.
49. Berti JA, Amaral ME, Boschero AC, Nunes VS, Harada LM, Castilho LN, et al. Thyroid hormone increases plasma cholesteryl ester transfer protein activity and plasma high-density lipoprotein removal rate in transgenic mice. *Metabolism*. 2001;50(5):530–6. <https://doi.org/10.1053/meta.2001.22514>.
50. Prieur X, Huby T, Coste H, Schaap FG, Chapman MJ, Rodríguez JC. Thyroid hormone regulates the hypotriglyceridemic gene APOA5. *J Biol Chem*. 2005; 280(30):27533–43. <https://doi.org/10.1074/jbc.M503139200>.
51. Chin K-Y, Ima-Nirwana S, Mohamed IN, Aminuddin A, Johari MH, Ngah WZW. The relationships between thyroid hormones and thyroid-stimulating

- hormone with lipid profile in Euthyroid men. *Int J Med Sci.* 2014;11(4):349–55. <https://doi.org/10.7150/ijms.7104>.
52. Geng L, Xu X, Zhang H, Chen C, Hou Y, Yao G, et al. Comprehensive expression profile of long non-coding RNAs in peripheral blood mononuclear cells from patients with neuropsychiatric systemic lupus erythematosus. *Ann Transl Med.* 2020;8(6):349. <https://doi.org/10.21037/atm.2020.03.25>.
53. Thomas F, Lüscher. Frontiers in lipid research: lipoprotein(a), apolipoprotein C-III and E, and PCSK9 and inflammation. *Eur Heart J.* 2019;40(33):2741–4. <https://doi.org/10.1093/eurheartj/ehz633>.
54. Huang Z, Lu X, Huang L, Zhang C, Veldhuis JD, Cowley MA, et al. Stimulation of endogenous pulsatile growth hormone secretion by activation of growth hormone secretagogue receptor reduces the fat accumulation and improves the insulin sensitivity in obese mice. *FASEB J.* 2021;35(1):e21269. <https://doi.org/10.1096/fj.202001924RR>.
55. Stanley TL, Fourman LT, Zheng I, et al. Relationship of IGF-1 and IGF-binding proteins to disease severity and Glycemia in nonalcoholic fatty liver disease. *J Clin Endocrinol Metab.* 2021;106(2):e520–33. <https://doi.org/10.1210/clinem.dgaa792>.
56. Zardi EM, Giorgi C, Zardi DM. Diagnostic approach to neuropsychiatric lupus erythematosus: what should we do? *Postgrad Med.* 2018;130(6):536–47. <https://doi.org/10.1080/00325481.2018.1492309>.
57. Petri M, Orbai AM, Alarcon GS, Gordon C, Merrill JT, Fortin PR, et al. Derivation and validation of the systemic lupus international collaborating clinics classification criteria for systemic lupus erythematosus. *Arthritis Rheum.* 2012;64(8):2677–86. <https://doi.org/10.1002/art.34473>.
58. Gronwall C, Akhter E, Oh C, Burlingame RW, Petri M, Silverman GJ. IgM autoantibodies to distinct apoptosis-associated antigens correlate with protection from cardiovascular events and renal disease in patients with SLE. *Clin Immunol.* 2012;142(3):390–8. <https://doi.org/10.1016/j.clim.2012.01.002>.
59. Dema B, Charles N. Autoantibodies in SLE: specificities, Isotypes and receptors. *Antibodies (Basel).* 2016;5(1):2. <https://doi.org/10.3390/antib5010002>.
60. Dias-Santos A, Proenca RP, Tavares Ferreira J, et al. The role of ophthalmic imaging in central nervous system degeneration in systemic lupus erythematosus. *Autoimmun Rev.* 2018;17(6):617–24. <https://doi.org/10.1016/j.autrev.2018.01.011>.
61. Aranow C, Diamond B, Backay M. Pathogenesis of the nervous system. In: Wallace DJ, Hahn BH, editors. *Dubois' lupus Erythematosus and related syndromes*. Philadelphia: Saunders; 2013. p. 363–7. <https://doi.org/10.1016/B978-1-4377-1893-5.00028-5>.
62. Ward MM. Premature morbidity from cardiovascular and cerebrovascular diseases in women with systemic lupus erythematosus. *Arthritis Rheum.* 1999 Feb;42(2):338–46. [https://doi.org/10.1002/1529-0131\(199902\)42:2<338::AID-ANR17>3.0.CO;2-U](https://doi.org/10.1002/1529-0131(199902)42:2<338::AID-ANR17>3.0.CO;2-U).
63. Zhang Y, Han H, Chu L. Neuropsychiatric lupus Erythematosus: future directions and challenges; a systematic review and survey. *Clinics (Sao Paulo).* 2020;75:e1515. <https://doi.org/10.6061/clinics/2020/e1515>. eCollection 2020.
64. Benedek M, Jauk E, Beaty RE, Fink A, Koschutnig K, Neubauer AC. Brain mechanisms associated with internally directed attention and self-generated thought. *Sci Rep.* 2016;6:22959. <https://doi.org/10.1038/srep22959>.
65. Mattfeld AT, Whitfield-Gabrieli S, Biederman J, Spencer T, Brown A, Fried R, et al. Dissociation of working memory impairments and attention-deficit/hyperactivity disorder in the brain. *Neuroimage Clin.* 2016;10:274–82. <https://doi.org/10.1016/j.nicl.2015.12.003>.
66. Giltaiy NV, Chappell CP, Clark EA. B-cell selection and the development of autoantibodies. *Arthritis Res Ther.* 2012;14(Suppl. 4):S1. <https://doi.org/10.1186/ar3918>.
67. Han S, Zhuang H, Shumyak S, Yang L, Reeves WH. Mechanisms of autoantibody production in systemic lupus erythematosus. *Front Immunol.* 2015;6:228. <https://doi.org/10.3389/fimmu.2015.00228>.
68. Lamagna C, Hu Y, DeFranco AL, Lowell CA. B cell-specific loss of Lyn kinase leads to autoimmunity. *J Immunol.* 2014;192(3):919–28. <https://doi.org/10.4049/jimmunol.1301979>.
69. Duarte-García A, Romero-Díaz J, Juárez S, Cicero-Casarrubias A, Fragoso-Loyo H, Núñez-Alvarez C, et al. Disease activity, autoantibodies, and inflammatory molecules in serum and cerebrospinal fluid of patients with systemic lupus Erythematosus and cognitive dysfunction. *PLoS One.* 2018; 13(5):e0196487. <https://doi.org/10.1371/journal.pone.0196487>. eCollection 2018.
70. Tibbling G, Link H, Ohman S. Principles of albumin and IgG analyses in neurological disorders. I. Establishment of reference values. *Scand J Clin Lab Invest.* 1977;37(5):385–90. <https://doi.org/10.3109/00365517709091496>.
71. Abbott NJ, Mendonca LL, Dolman DE. The blood-brain barrier in systemic lupus erythematosus. *Lupus.* 2003;12(12):908–15. <https://doi.org/10.1191/0961203303lu5010a>.
72. Idborg H, Eketjäll S, Pettersson S, Gustafsson JT, Zickert A, Kvarnström M, et al. TNF- $\alpha$  and plasma albumin as biomarkers of disease activity in systemic lupus erythematosus. *Lupus Sci Med.* 2018;5(1):e000260. <https://doi.org/10.1136/lupus-2018-000260>.
73. White RG, Bass BH, Williams E. Lymphadenoid goitre and the syndrome of systemic lupus erythematosus. *Lancet.* 1961;277(7173):368–73. [https://doi.org/10.1016/S0140-6736\(61\)91537-9](https://doi.org/10.1016/S0140-6736(61)91537-9).
74. Blich M, Rozin A, Edoute Y. Systemic lupus erythematosus and thyroid disease. *Isr Med Assoc J.* 2004;6(4):218–20.
75. Quinlan P, Nordlund A, Lind K, Gustafson D, Edman Å, Wallin A. Thyroid hormones are associated with poorer cognition in mild cognitive impairment. *Dement Geriatr Cogn Disord.* 2010;30(3):205–11. <https://doi.org/10.1159/000319746>.
76. Xue C, Bian L, Xie YS, Yin ZF, Xu ZJ, Chen QZ, et al. Low FT3 is associated with diminished health-related quality of life in patients with acute coronary syndrome treated with drug-eluting stent: a longitudinal observational study. *Oncotarget.* 2017;8(55):94580–90. <https://doi.org/10.18632/oncotarget.21811>. eCollection 2017 Nov 7.
77. Lee JS, Soh Y, Kim H-G, Lee KM, Kwon YN, Yoon SS, et al. Interactive effects of Apolipoprotein E  $\epsilon$ 4 and Triiodothyronine on memory performance in patients with subjective cognitive decline. *Front Med (Lausanne).* 2020;7:298. <https://doi.org/10.3389/fmed.2020.00298>. eCollection 2020.
78. Bruce IN. 'Not only...But also': factors that contribute to accelerated atherosclerosis and premature coronary heart disease in systemic lupus erythematosus. *Rheumatology.* 2005;44(12):1492–502. <https://doi.org/10.1093/rheumatology/kei142>.
79. Manzi S, Meilahn EN, Rairie JE, Conte CG, Medsger TA, Jansenmwilliams L, et al. Age-specific incidence rates of myocardial infarction and angina in women with systemic lupus Erythematosus: comparison with the Framingham study. *Am J Epidemiol.* 1997;145(5):408–15. <https://doi.org/10.1093/oxfordjournals.aje.a009122>.
80. Vaziri ND, Moradi H. Mechanisms of dyslipidemia of chronic renal failure. *Hemodial Int.* 2006;10(1):1–7. <https://doi.org/10.1111/j.1542-4758.2006.01168.x>.
81. Attman PO, Alaupovic P. Lipid and apolipoprotein profiles of uremic dyslipoproteinemia - relation to renal function and dialysis. *Nephron.* 1991; 57(4):401–10. <https://doi.org/10.1159/000186303>.
82. Peppia M, Betsi G, Dimitriadis G. Lipid abnormalities and Cardiometabolic risk in Patients with overt and subclinical thyroid disease. *J Lipids.* 2011; 2011(575840):9. <https://doi.org/10.1155/2011/575840>. Epub 2011 Jul 18.
83. Zhang X, Liu L, Ma X, Hu W, Xu X, Huang S, et al. Clinical significance of non-thyroidal illness syndrome on disease activity and dyslipidemia in patients with SLE. *PLoS One.* 2020;15(4):e0231622. <https://doi.org/10.1371/journal.pone.0231622>.
84. William Rebeck G. The role of APOE on lipid homeostasis and inflammation in normal brains. *J Lipid Res.* 2017;58(8):1493–9. <https://doi.org/10.1194/jlr.R075408>.
85. Huebbe P, Rimbach G. Evolution of human apolipoprotein E (APOE) isoforms: gene structure, protein function and interaction with dietary factors. *Ageing Res Rev.* 2017;37:146–61. <https://doi.org/10.1016/j.arr.2017.06.002>.
86. David Marais A. Apolipoprotein E in lipoprotein metabolism, health and cardiovascular disease. *Pathology.* 2019;51(2):165–76. <https://doi.org/10.1016/j.pathol.2018.11.002>.
87. Zhao N, Liu C-C, Qiao W, Bu G. Apolipoprotein E, receptors, and modulation of Alzheimer's disease. *Biol Psychiatry.* 2018 Feb 15;83(4):347–57. <https://doi.org/10.1016/j.biopsych.2017.03.003>.
88. Lane-Donovan C, Wong WM, Durakoglugil MS, Wasser CR, Jiang S, Xian X, et al. Genetic restoration of plasma ApoE improves cognition and partially restores synaptic defects in ApoE-deficient mice. *J Neurosci.* 2016;36(39): 10141–50. <https://doi.org/10.1523/JNEUROSCI.1054-16.2016>.
89. Fan J, Tao W, Li X, He L, Zhang J, Wei D, et al. The contribution of genetic factors to cognitive impairment and dementia: Apolipoprotein E gene, gene interactions, and polygenic risk. *Int J Mol Sci.* 2019;20(5):1177. <https://doi.org/10.3390/ijms20051177>.

90. Millán J, Pintó X, Muñoz A, Zúñiga M, Rubiés-Prat J, Pallardo LF, et al. Lipoprotein ratios: physiological significance and clinical usefulness in cardiovascular prevention. *Vasc Health Risk Manag.* 2009;5:757–65.
91. Lewis TL, Cao D, Lu H, Mans RA, Su YR, Jungbauer L, et al. Overexpression of human apolipoprotein A-I preserves cognitive function and attenuates neuroinflammation and cerebral amyloid angiopathy in a mouse model of Alzheimer disease. *J Biol Chem.* 2010;285(47):36958–68. <https://doi.org/10.1074/jbc.M110.127829>.
92. Kawano M, Kawakami M, Otsuka M, Yashima H, Yaginuma T, Ueki A. Marked decrease of plasma apolipoprotein AI and AII in Japanese patients with late-onset non-familial Alzheimer's disease. *Chim Acta.* 1995;239(2):209–11. [https://doi.org/10.1016/0009-8981\(95\)06115-t](https://doi.org/10.1016/0009-8981(95)06115-t).
93. Morley JE, Kaiser F, Raum WJ, Perry HM 3rd, Flood JF, Jensen J, et al. Potentially predictive and manipulable blood serum correlates of aging in the healthy human male: progressive decreases in bioavailable testosterone, dehydroepiandrosterone sulfate, and the ratio of insulin-like growth factor 1 to growth hormone. *Proc Natl Acad Sci U S A.* 1997;94(14):7537–42. <https://doi.org/10.1073/pnas.94.14.7537>.
94. Rollero A, Murialdo G, Fonzi S, Garrone S, Gianelli MV, Gazzero E, et al. Relationship between cognitive function, growth hormone and insulin-like growth factor I plasma levels in aged subjects. *Neuropsychobiology.* 1998; 38(2):73–9. <https://doi.org/10.1159/000026520>.
95. Denko CW, Malesud CJ. Age-related changes in serum growth hormone, insulin-like growth factor-1 and Somatostatin in system lupus Erythematosus. *BMC Musculoskelet Disord.* 2004;5:37. <https://doi.org/10.1186/1471-2474-5-37>.
96. Tumati S, Burger H, Martens S, van der Schouw YT, Aleman A. Association between cognition and serum insulin-like growth factor-1 in Middle-Aged & Older men: an 8 year follow-up study. *PLoS One.* 2016;11(4):e0154450. <https://doi.org/10.1371/journal.pone.0154450>.
97. Jin L, Shen F, Weinfeld M, et al. Insulin growth factor binding protein 7 (IGFBP7)-related cancer and IGFBP3 and IGFBP7 crosstalk. *Front Oncol.* 2020; 10:727. <https://doi.org/10.3389/fonc.2020.00727>. eCollection 2020.
98. Jiang W, Xiang C, Cazacu S, Brodie C, Mikkelsen T. Insulin-like growth factor binding protein 7 mediates glioma cell growth and migration. *Neoplasia.* 2008;10(12):1335–42. <https://doi.org/10.1593/neo.08694>.
99. Agbemenyah HY, Agis-Balboa RC, Burkhardt S, et al. Insulin growth factor binding protein 7 is a novel target to treat dementia. *Neurobiol Dis.* 2014; 62:135–43. <https://doi.org/10.1016/j.nbd.2013.09.011>.
100. Bar O, Gelb S, Atamny K, Anzi S, Ben-Zvi A. Angiomodulin (IGFBP7) is a cerebral specific angiocrine factor, but is probably not a blood-brain barrier inducer. *Fluids Barriers CNS.* 2020;17(1):27. <https://doi.org/10.1186/s12987-020-00188-2>.

## Publisher's Note

Springer Nature remains neutral with regard to jurisdictional claims in published maps and institutional affiliations.

**Ready to submit your research? Choose BMC and benefit from:**

- fast, convenient online submission
- thorough peer review by experienced researchers in your field
- rapid publication on acceptance
- support for research data, including large and complex data types
- gold Open Access which fosters wider collaboration and increased citations
- maximum visibility for your research: over 100M website views per year

**At BMC, research is always in progress.**

Learn more [biomedcentral.com/submissions](https://biomedcentral.com/submissions)

